

12. Figure 16-6 is a ventral view of the female external genitalia. Label the clitoris, labia minora, urethral orifice, hymen, mons pubis, and vaginal orifice on the figure. These structures are indicated with leader lines. Then color the homologue of the male penis blue, color the membrane that partially obstructs the vagina yellow, and color the distal end of the birth canal red.

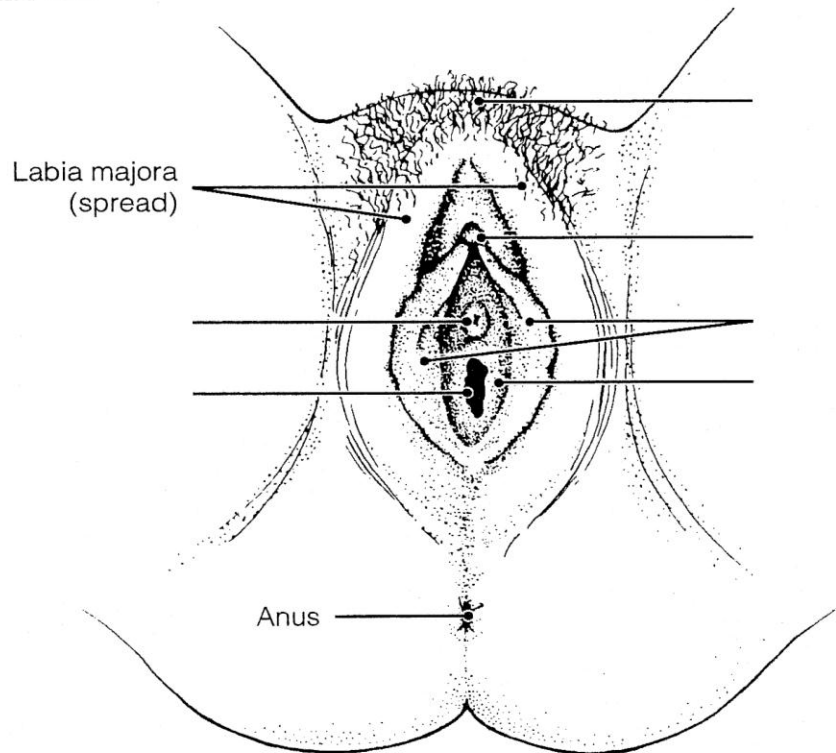


Figure 16-6

FEMALE REPRODUCTIVE FUNCTIONS AND CYCLES

13. Using the key choices, identify the cell type you would expect to find in the following structures. Insert the correct term or letter response in the answer blanks.

Key Choices

- | | |
|-------------------|---------------------|
| A. Oogonium | C. Secondary oocyte |
| B. Primary oocyte | D. Ovum |

- | | |
|-------|--|
| _____ | 1. Forming part of the primary follicle in the ovary |
| _____ | 2. In the uterine tube before fertilization |
| _____ | 3. In the mature, or Graafian, follicle of the ovary |
| _____ | 4. In the uterine tube shortly after sperm penetration |